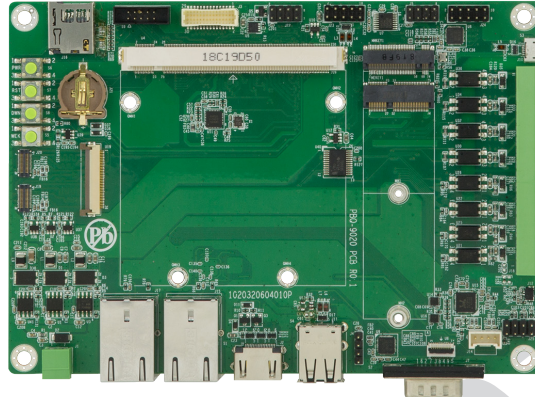


PBQ-9020

Qseven® w/EPIC FF Carrier Board for EmQ-RK390



Features

- Qseven® Carrier Board
- Two Giga Ethernet Ports
- One dual channels 24-bit LVDS and one HDMI port

I/O

Display	1 x Dual Channel 24 bit LVDS connector 1 x HDMI connector
Camera	2 x MIPI CSI support (4 x lanes + 2 x lanes)
Audio	I2S Link
Ethernet	2 Giga Ethernet ports w/ RJ-45 connector (One comes from CPU module, one on carrier board)
Serial Port	4 x Series ports; COM 1, COM2: RS232/422/485 COM 3, COM4: RS232
USB Port	4 x USB 2.0 ports 1 x SuperSpeed ports
SDIO	1 x SD Socket
GPIO	8-bit GPIO supported

OS Support

Linux: Ubuntu, Buildroot
Android 8.1

Mechanical & Environmental

Power Requirement	5V/3A
Power Consumption	TBD
Operating Temp.	-20 ~ 70°C (-4 ~ 158°F)
Dimension (L x W)	165 x 115 mm (6.5" x 4.53")