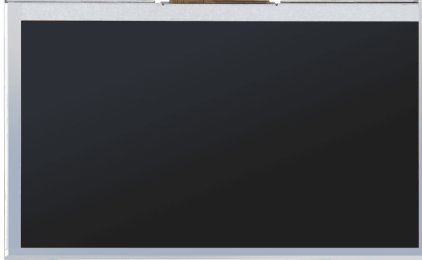




OFM-070 Series

Open-Frame Industrial Monitor



Features

- Low Power Consumption for Resistive Touch Screen
- High contrast color TFT-LCD Monitor support resolution
- Advanced OSD control
- **Operating temperature: -10 ~60°C**

Specification

Display		
Model	OFM-070A	OFM-07TA
Screen Size	7" TFT LCD Panel	7" TFT LCD Panel
Resolution	800 x 480	800 x 480
View Angle	70°/70°/50°/70° (R/L/U/D)	70°/70°/50°/70° (R/L/U/D)
Brightness	400 cd/m ²	400 cd/m ²
Color Support	16.7M	16.7M
Contrast Ratio	500:1	500:1
Response Time	15(msec)	15(msec)
Backlight Life	20,000hrs	20,000hrs
TouchScreen		
T/S Type	N/A	4-Wire Resistive Touchscreen / Projected Capacitive(Optional) Touchscreen
Surface Hardness	N/A	3H / 6H
Transparency	N/A	80% / 85%
Environmental		
Operating Temp.	-10 ~ 60°C (14 ~ 140°F)	-10 ~ 60°C (14 ~ 140°F)
Storage Temp.	-20 ~ 70°C (-4 ~ 158°F)	-20 ~ 70°C (-4 ~ 158°F)
Humidity	5~90%, 40°C	5~90%, 40°C
I/O Ports		
Video Port	1 x VGA video input 1 x HDMI video input 1 x AV video input	1 x VGA video input 1 x HDMI video input 1 x AV video input
Qualification		
Certification	CE, FCC Class A	
Power Requirement		
Power Input	DC 12V / 2A input	DC 12V / 2A input
Power Consumption	Max. 5.4W	Max. 5.4W

All specifications are subject to change without notice.

OSD Key

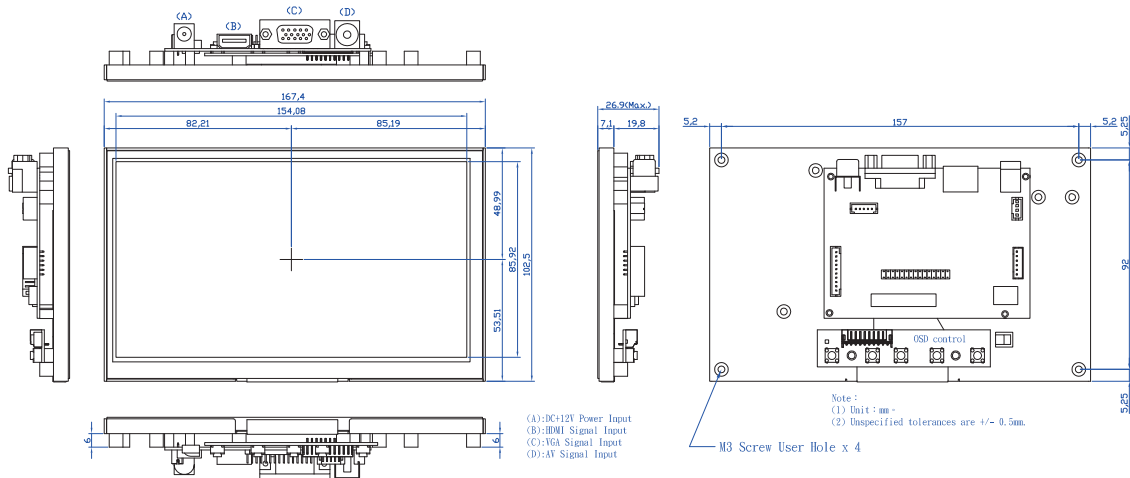
Buttons

Yes (with 5 physical buttons to control the device)
 1 x Power key; 1 x Menu key; 1 x Auto key; 2 x Arrow key

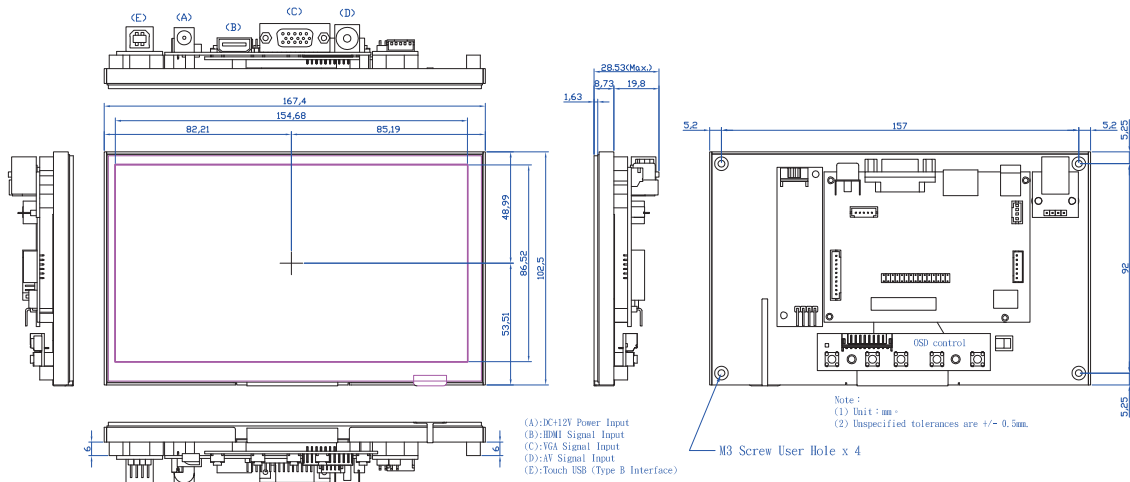
Dimension

Unit:mm

Open Frame LCD Monitor



Open Frame Touch LCD Monitor (4W-RTP)



Ordering Information

OFM-07TA 7" LCD Open Frame Monitor, WVGA, 400cd/m2, Resistive Touch Screen

OFM-070A 7" LCD Open Frame Monitor, WVGA, 400cd/m2, non-Touch

Optional Accessory

Power Cord (US Plug) Power Cord / 1.8M, W/3-pin plug, US Plug

Power Cord (EU Plug) Power Cord / 1.8M, W/2-pin plug, EU Plug