
Gladius G0710(S)

Rugged Tablet PC

User's Manual

Version 1.0

This page is intentionally left blank.

Contents

Copyright Notice	i
Declaration of Conformity	i
Important Safety Instructions	ii
Classification.....	iii
Disposing of Your Old Product.....	iv
Symbols Description	iv
About User's Manual	v
Warning.....	v
Additional Information & Technical Support.....	v
Contact Information.....	v
Warranty.....	vi
Chapter 1 - General Information.....	1
1.1 Packing List.....	2
1.2 Ordering Information	2
1.3 Specifications.....	3
1.4 Dimensions.....	5
1.5 Introduction	6
1.5.1 Front Side.....	7
1.5.2 Function Buttons.....	8
1.5.3 LED Indicators	8
1.5.4 Rear Side.....	9
1.5.5 Right Side.....	10
1.5.6 Left Side	10
Chapter 2 - Using the Tablet PC	11
2.1 Getting Started	12
2.2 Battery Replacement	13
2.3 SIM Card Installation	16
2.4 DC Power Supply	17
2.5 Drivers & Utilities Installation	18
2.5.1 Touch Screen Driver Installation	18
2.5.2 Chipset Driver Installation.....	21
2.5.3 Graphics Driver Installation	24

2.5.4 Audio Driver Installation	27
2.5.5 LAN Driver Installation.....	29
2.5.6 Wireless LAN Driver Installation.....	31
2.5.7 Bluetooth Driver Installation	32
2.5.8 RFID Driver Installation.....	36
2.5.9 Function Key Tray Installation	39
2.6 Touch Screen	41
2.6.1 Tips for Using the Stylus	41
2.6.2 PenMount Monitor	42
2.6.3 PenMount Control Panel.....	43
2.7 Function Key Tray	50
2.7.1 Function Key Configuration	50
Chapter 3 - BIOS	51
3.1 BIOS Main Setup	52
3.2 Advanced Settings.....	53
3.2.1 IDE Configuration	54
3.2.2 Brightness Default Level.....	57
3.2.3 Install OS Configuration.....	57
3.2.4 Bluetooth Configuration	57
3.2.5 RFID Configuration.....	57
3.2.6 WiFi Configuration.....	57
3.2.7 Battery Low Beep Configuration.....	57
3.3 Boot Settings.....	58
3.3.1 Boot Settings Configuration.....	59
3.3.2 Boot Device Priority	60
3.3 Security.....	61
3.4 Exit Options.....	63
Appendix	65
A.1 POGO Connector.....	66

Copyright Notice

All Rights Reserved.

The information in this document is subject to change without prior notice in order to improve the reliability, design and function. It does not represent a commitment on the part of the manufacturer.

Under no circumstances will the manufacturer be liable for any direct, indirect, special, incidental, or consequential damages arising from the use or inability to use the product or documentation, even if advised of the possibility of such damages.

This document contains proprietary information protected by copyright. All rights are reserved. No part of this manual may be reproduced by any mechanical, electronic, or other means in any form without prior written permission of the manufacturer.

Declaration of Conformity

CE Class B

This product has passed the CE test for environmental specifications when shielded cables are used for external wiring. We recommend the use of shielded cables. This kind of cable is available from ARBOR. Please contact your local supplier for ordering information.

This product has passed the CE test for environmental specifications. Test conditions for passing included the equipment being operated within an industrial enclosure. In order to protect the product from being damaged by ESD (Electrostatic Discharge) and EMI leakage, we strongly recommend the use of CE-compliant industrial enclosure products.

FCC Class B

This device complies with part 15 of the FCC Rules. Operation is subject to the following two conditions: (1) This device may not cause harmful interference, and (2) this device must accept any interference received, including interference that may cause undesired operation.

This equipment has been tested and found to comply with the limits for a Class B digital device, pursuant to part 15 of the FCC Rules. These limits are designed to provide reasonable protection against harmful interference when the equipment is operated in a residential environment. This equipment generates, uses, and can radiate radio frequency energy and, if not installed and used in accordance with the instructions, may cause harmful interference to radio communications. Operation of this equipment in a residential area is likely to cause harmful interference in which case the user will be required to correct the interference at his own expense.

IEC 60601-1/EN60601-1

This product complies with the system standard IEC 60601-1 Medical Electrical Equipment Part 1: General Requirements for Safety. And therefore, the product is exclusively interconnected with IEC 60601-1 certified equipment in the patient environment.

Equipment connected to the analog or digital interfaces of the unit must comply with the respective IEC standards (e.g. IEC 60601-1 for medical equipment). Furthermore all configurations shall comply with the current version of the standard for SYSTEMS IEC 60601-1-1. Everybody who connects additional equipment to the signal input part or signal output part configures a medical system, and is therefore responsible that the system complies with current version of the requirements of the system standard IEC 60601-1-1. If in doubt, consult the technical service department or your local representative.

Important Safety Instructions

Read these safety instructions carefully

1. Read all cautions and warnings on the equipment.
2. Place this equipment on a reliable surface when installing. Dropping it or letting it fall may cause damage
3. Make sure the correct voltage is connected to the equipment.
4. For pluggable equipment, the socket outlet should be near the equipment and should be easily accessible.
5. Keep this equipment away from humidity.
6. Disconnect this equipment from the A/C outlet before cleaning it. Use a moist cloth. Do not use liquid or sprayed detergent for cleaning.
7. Do not scratch or rub the screen with a hard object.
8. Never use any of the solvents, such as Thinner Spray-type cleaner, Wax, Benzene, Abrasive cleaner, Acid or Alkaline solvent, on the Medical Display. Harsh chemicals may cause damage to the cabinet and the touch sensor.
9. Remove dirt with a lightly moistened cloth and a mild solvent detergent. Then wipe the cabinet with a soft dry cloth.
7. The openings on the enclosure are for air convection and protect the equipment from overheating. **DO NOT COVER THE OPENINGS.**
8. Position the power cord so that people cannot step on it. Do not place anything over the power cord.
9. If the equipment will not be used for a long time, disconnect it from the power source to avoid damage by transient overvoltage.

-
10. Never pour any liquid into openings. This may cause fire or electrical shock.
 11. Never open the equipment. For safety reasons, the equipment should be opened only by qualified service personnel.
 12. If one of the following situations arises, get the equipment checked by service personnel:
 - a. The power cord or plug is damaged.
 - b. Liquid has penetrated into the equipment.
 - c. The equipment has been exposed to moisture.
 - d. The equipment does not work well, or you cannot get it to work according to the user's manual.
 - e. The equipment has been dropped or damaged.
 - f. The equipment has obvious signs of breakage.
 13. The sound pressure level at the operator's position, according to IEC 704-1:1982, is no more than 70dB(A).
 14. Keep this User's Manual for later reference.
 15. **DO NOT LEAVE THIS EQUIPMENT IN AN UNCONTROLLED ENVIRONMENT WHERE THE STORAGE TEMPERATURE IS BELOW -20° C (-4° F) OR ABOVE 60° C (140° F). THIS MAY DAMAGE THE EQUIPMENT.**



UL Class I Classification: With respect to electric shock, fire and mechanical hazards only, in accordance with UL-60601-1 and CAN/CSA C22.2 No. 601.1.

Classification

- Powered by Class I power supply
- No applied part
- Degree of protection against the ingress of water: IPX0
- Mode of operation: Continuous
- The equipment is not suitable for use in the presence of a flammable anesthetic mixture with air or nitrous oxide: Not AP or APG Category.

Disposing of Your Old Product

- **Within the European Union**



EU-wide legislation, as implemented in each Member State, requires that waste electrical and electronic products carrying the mark (left) must be disposed of separately from normal household waste.

This includes monitors and electrical accessories, such as signal cables or power cords. When you need to dispose of your display products, please follow the guidance of your local authority, or ask the shop where you purchased the product, or if applicable, follow any agreements made between yourself. The mark on electrical and electronic products only applies to the current European Union Member States.

- **Outside the European Union**

If you wish to dispose of used electrical and electronic products outside the European Union, please contact your local authority so as to comply with the correct disposal method.

Symbols Description



This symbol indicates that there is a danger of injury to the user or a risk of damage to the product, should warning notices be disregarded.



Direct Current



Ground



Stand-by

About User's Manual

This User's Manual is intended for experienced users and integrators with hardware knowledge of personal computers. If you are not sure about any description in this User's Manual, please consult your vendor before further handling.

Warning

Any changes or modifications not expressly approved by the guarantee of this device could void the user's authority to operate the equipment.

Additional Information & Technical Support

You can download the related technical documents such as datasheet and user's manual as well as driver on our website.

Please do not hesitate to call or e-mail our customer service when you still cannot get the information you need.

<http://www.arbor.com.tw>

E-mail: info@arbor.com.tw

Contact Information

ARBOR Technology Corp.

10th fl., No. 700, Zhong Zheng Rd., Zhong He, 235 Taipei, Taiwan.

TEL: +886-2-8226-9396

FAX: +886-2-8226-9398

Warranty

This product is warranted to be in good working order for a period of one year from the date of purchase. Should this product fail to be in good working order at any time during this period, we will, at our option, replace or repair it at no additional charge except as set forth in the following terms. This warranty does not apply to products damaged by misuse, modifications, accident or disaster. Please be advised that disassembling this equipment may void the warranty as well.

Vendor assumes no liability for any damages, lost profits, lost savings or any other incidental or consequential damage resulting from the use, misuse of, or inability to use this product. Vendor will not be liable for any claim made by any other related party.

Vendor disclaims all other warranties, either expressed or implied, including but not limited to implied warranties of merchantability and fitness for a particular purpose, with respect to the hardware, the accompanying product's manual(s) and written materials, and any accompanying hardware. This limited warranty gives you specific legal rights.

Return authorization must be obtained from the vendor before returned merchandise will be accepted. Authorization can be obtained by calling or faxing the vendor and requesting a Return Merchandise Authorization (RMA) number. Returned goods should always be accompanied by a clear problem description.



Chapter 1

General Information

1.1 Packing List

Tablet PC	1 x Gladius G0710(S) Rugged Tablet PC
Accessories	1 x AC to DC Power Adapter 1 x Power Cord 1 x User's Manual 1 x Driver CD 1 x Stylus 1 x Stylus-Pen Rope

Before up and running, please make sure the package contains all of above accessories.

If any of the above items is damaged or missing, contact your vendor immediately.

1.2 Ordering Information

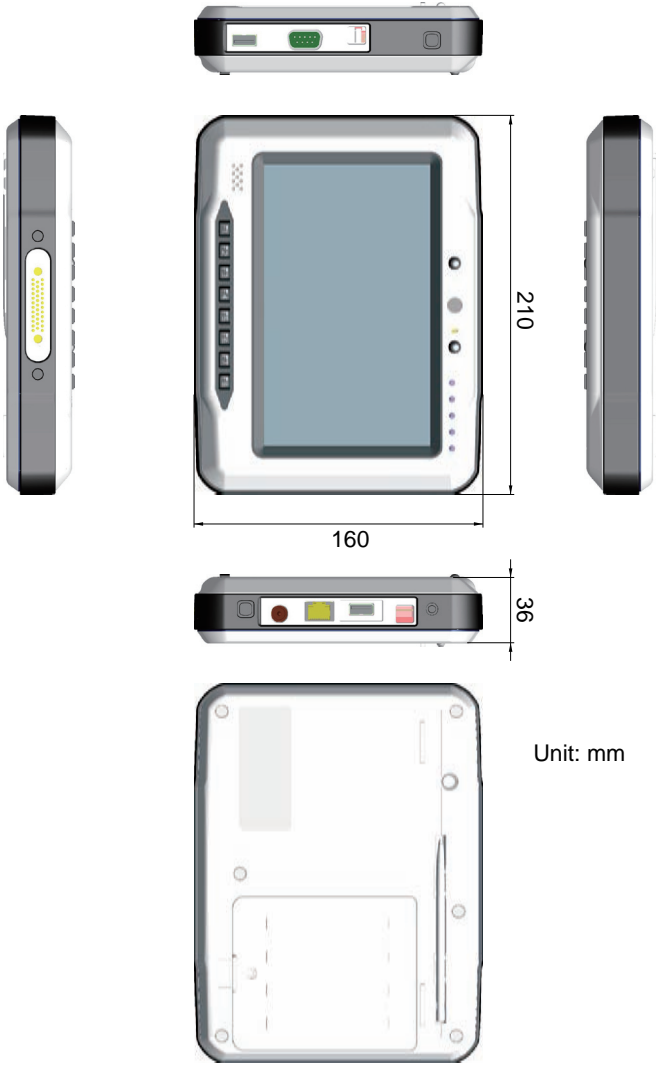
G0710-CF	7" Intel Atom™ tablet PC with 4GB CF
G0710-HDD	7" Intel Atom™ tablet PC with 60GB 1.8" IDE HDD
G0710S-CF	7" Intel Atom™ tablet PC with 4GB CF, outdoor readable touch screen
G0710S-HDD	7" Intel Atom™ tablet PC with 60GB 1.8" IDE HDD, outdoor readable touch screen
PAC-M090W	90W AC/DC medical grade adapter and power cord kit
BAT-0710	Battery pack kit
HSUPA-0710	MiniCard HSUPA (3.75G) module supporting WCDMA, HSUPA, HSDPA & E-GPRS, Triband HSDPA/UMTS (850, 1900 and 2100MHz), Quadband EDGE/GPRS/GSM (850, 900, 1800, and 1900MHz)

1.3 Specifications

Model Name	Gladius G0710(S) Rugged Tablet PC		
System	CPU	Intel Atom Z510 1.1GHz with 400MHz FSB	
	Chipset	Intel® System Controller Hub US15W	
	Graphics Controller	GMA 500 Integrated	
	Memory	Soldered onboard 1GB DDR2-533 SDRAM	
	Audio	Azalia HD Audio codec ALC888-GR	
	Storage	1 x 4GB CompactFlash (default)	
		1 x 60GB 1.8" slim IDE HDD (option)	
	Connectivity	Realtek 8111B PCI-E Gigabit Ethernet	
		802.11 b/g/n WLAN	
		Bluetooth 2.0 + EDR module	
HSUPA (3.75G) (optional)			
RFID	ISO 15693/14443A/14443B RFID (distance: 3 ~ 5cm; speed: 5 cards/sec.)		
Camera	1 x 1.3 megapixel CMOS camera w/ Microphone (front)		
	1 x 2.0 megapixel CMOS camera (rear)		
I/O	Serial Port	1 x RS-232	
	USB Port	2 x USB 2.0	
	LAN	1 x RJ-45 GbE LAN	
	Power Input	1 x DC jack	
	Docking Connection	1 x 35-pin pogo connector for docking station	
LEDs & Buttons	LED Indicator	5 LEDs on the front panel	
	Power Button	1 x Power on/off button	
	Reset Button	1 x System reset button	
	RFID Button	1 x RFID on/off button	
	Function Button	8 x Function button	

LCD Display	Display	7" wide active matrix TFT
	Resolution	1024 x 600 resistive touch panel
	Brightness	375 cd/m ² (typ.)
	Contrast	400:1
	Backlight Type	LED
Touch Panel	Panel Type	Resistive
	Transparency	73% (typ.)
Power System	Power Adapter	Power Input: 100 ~ 240V _{AC}
		Power Output: 20V _{DC} , 90W (G0710) 20V _{DC} , 60W (G0710S)
	Battery	Li-ion battery pack 4S1P 2600mAH; Approximately 4hrs charged battery life
Mechanical & Environmental	Dimensions (W x D x H)	210 x 36 x 160 mm (8.26" x 1.42" x 6.29")
	Operating Temp.	0 ~ 45°C (32 ~ 113°F)
	Transport & Storage Temp.	-20 ~ 60°C (-4 ~ 140°F)
	Operating Humidity	5 ~ 85% (non-condensing)
	Storage Humidity	5 ~ 95% (non-condensing)
	EMI/EMC	CE/FCC Class B, UL60601-1, EN60601-1/ EN60601-1-2 compliant
	IP Rating	Front panel, IP54 compliant
	Vibration	1 Grms/5 ~ 500Hz/random operation
	Shock	10G acceleration (peak; 11ms duration)
	Transit Drop	1.2m (4ft) drop on wood (five sides except the front side)
	Weight (Net)	1kg (2.2 lb)

1.4 Dimensions



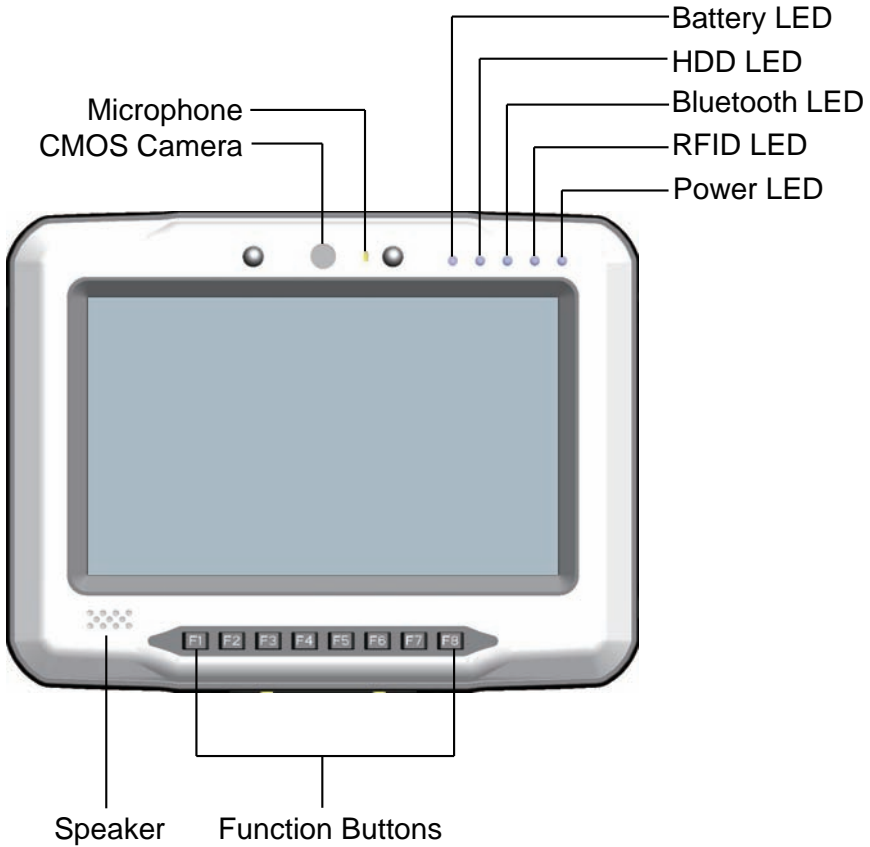
1.5 Introduction

As an ultra slim and ultra light unit which is easily to access, the tablet PC is equipped with a 7" active matrix TFT panel with a touch screen in front of it. The enclosure of the unit is IP54 compliant; and designed with the Intel Atom Z510 processor that consumes ultra low power, the system using passive ventilation does not rely on fans which are often unreliable. Besides, the system features instant resume and long charged battery life up to four hours.



35-pin POGO connector
to docking station

1.5.1 Front Side



Note:

The eight function buttons (F1 ~ F8) on the front panel are available after users have installed the Function Key utility. These buttons can be defined by users. The **Control Buttons** table below lists the default value for each function button. Should you want to change the settings, please select **Start > Settings > Control Panel** and then click the **Function Key Configure** icon to configure the functions of those buttons.

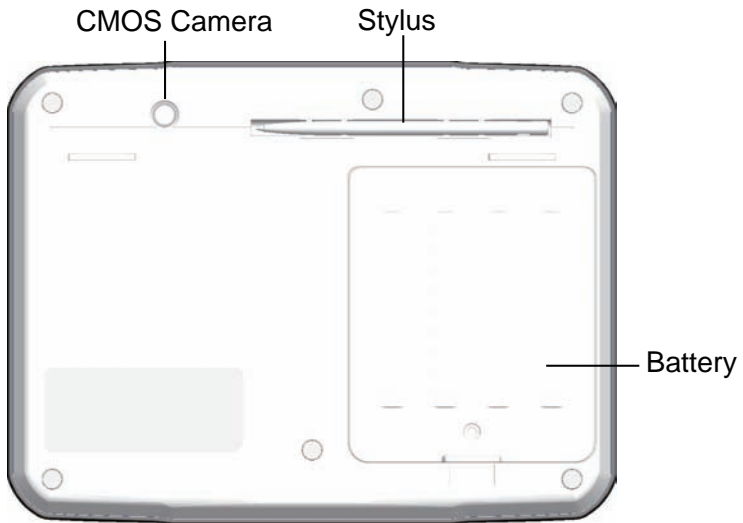
1.5.2 Function Buttons

Button		Description
F1	Brightness Up	Press to increase brightness
F2	Brightness Down	Press to decrease brightness
F3	Volume Up	Press to increase speaker volume
F4	Volume Down	Press to decrease speaker volume
F5	Mute	Press to enable/disable sound
F6	Bluetooth	Press to enable/disable Bluetooth connectivity
F7	Wi-Fi	Press to enable/disable Wi-Fi connectivity
F8	Touch	Press to lock/unlock the touch screen.

1.5.3 LED Indicators

LED	Color	Status	Description
Power	Green	On	Power on
		Off	No power
RFID	Amber	On	RFID reader enabled
		Off	RFID reader disabled
Bluetooth	Blue	Blinking	Bluetooth connection is active
HDD	Purple	Blinking	HDD is accessing
Battery	Green	On	Battery fully charged
		Blinking	Battery is charging

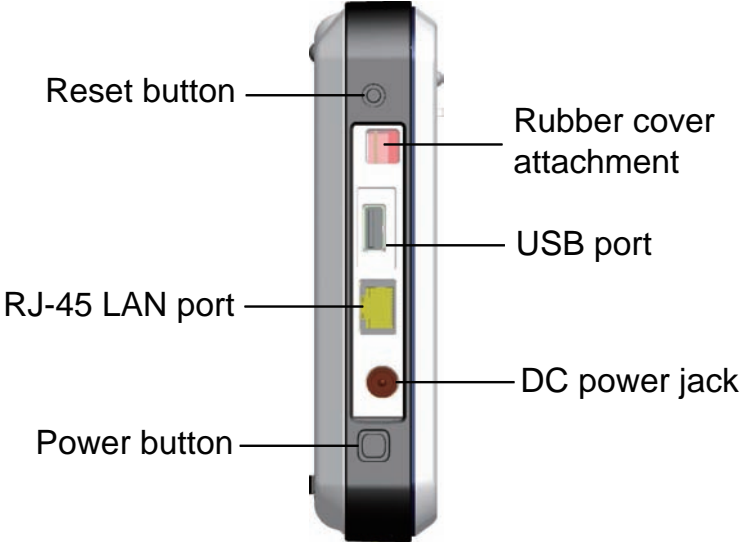
1.5.4 Rear Side



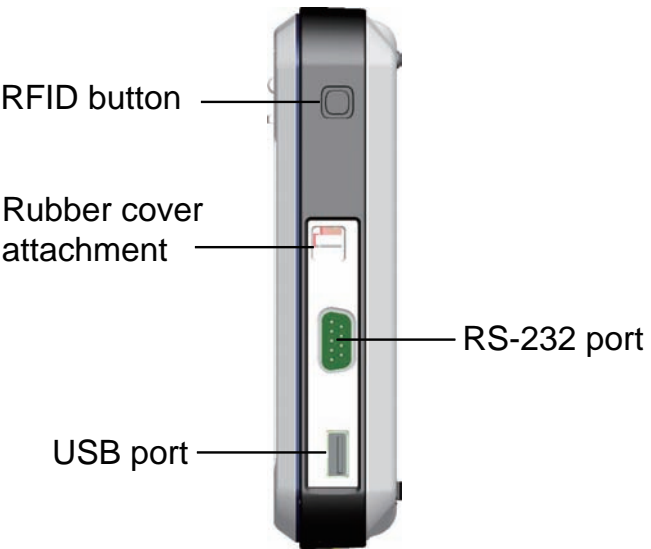
Note:

There are two CCD camera located on the front and rear panels respectively. Only one CCD camera functions at a time.

1.5.5 Right Side



1.5.6 Left Side





Chapter 2

Using the Tablet PC

2.1 Getting Started

This chapter is intended to give users the information about how to utilize the various function of the tablet PC. To be familiar with using the computer, please take a few minutes to read this manual.

Before installing operating system and driver utilities, you should prepare your own USB keyboard and USB CD ROM drive, and the power adapter included in the package if the battery charge level is insufficient. When the operating system on your computer is ready, please use the accompanying Driver CD to install the drivers and utilities for the respective devices. Apart from battery replacement, SIM card installation and DC power supply, the following sections will also guide you through the drivers and utilities installation step by step.



G0710 Tablet PC



Power Adapter & Power Cord



USB Keyboard



USB CD-ROM Drive

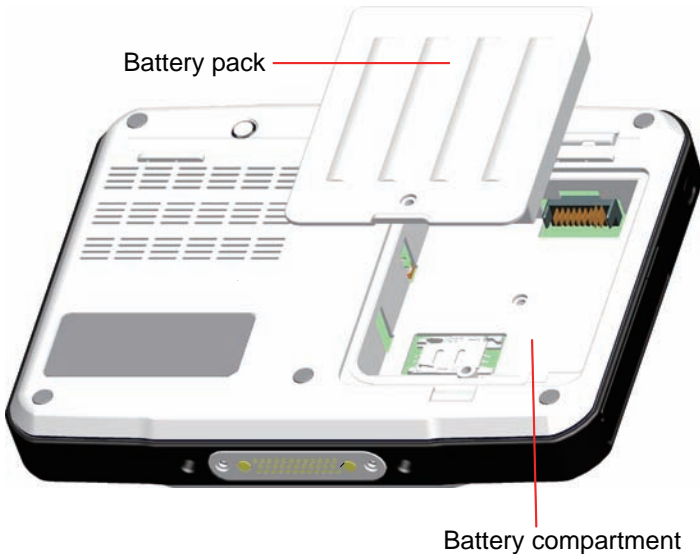


Driver CD

2.2 Battery Replacement

The tablet PC is equipped with a 4S1P rechargeable battery pack. When you want to replace the battery or remove it for SIM card installation, please follow the steps below:

1. Disconnect the DC power plug and turn off the computer.
2. Remove any peripheral devices connected to the computer.
3. Unscrew the screw which fixes the battery to the unit.
4. Remove the battery.
5. Insert the new battery into the battery compartment and fix it with the screw.





Instructions for Rechargeable Battery Pack

How to recharge:

- To recharge the Lithium-ion battery pack, install it into the computer and then connect the power adapter to the power input plug of the computer.
- The battery will be fully charged within 2-4 hours (depending on the capacity of the battery). When finished charging, the charge indicator will turn on steadily in green and then it's recommended to remove the adapter from the computer.
- It's recommended not to recharge intermittently, which means not plugging and unplugging the power adapter frequently in short period of time.
- It's recommended to turn off the computer before charging.
- Do not use the power adapter that is not made for your computer. Supplying the computer with inappropriate voltage may cause harm to the battery or, even worse, may burn the computer.

How to use:

- It's recommended to supply power via the adapter without the battery installed, while you are to use the computer for a long time. And reinstall the battery before you go out.
- The lithium-ion battery is currently one of the most popular battery packs right now. The biggest advantage is that it has no memory effect that users needn't worry about. Users can charge the battery anytime whether the battery is fully drained or not. However, it's recommended that users drain the battery until the system shows power shortage warning and then recharge the battery. Doing so is helpful to the reliability of using the battery.
- Don't use the battery pack as a power supply for other equipment.

How to store:

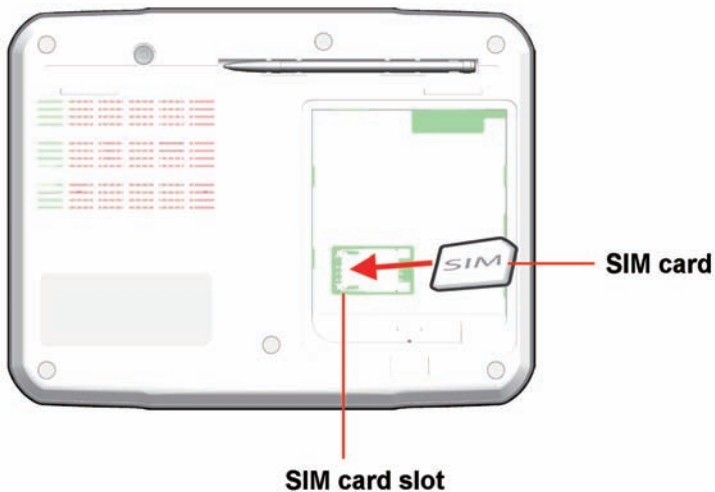
- Don't expose the battery to elevated heat situations such as under direct sunlight in a car or near fire.
- Don't disassemble the battery, or the battery leakage might cause skin or eye injury. If electrolyte leaking from the battery pack contacts your skin or clothing, immediately flush it with running water. If it splashes in eye, rinse the eye at least 15 minutes with clean water and then seek medical attention.
- To avoid battery leakage or explosion, don't discard the battery into water

- or fire, or near a heat source such as a gas stove or an oven.
- Use the appropriate container to store the battery such as a paper box. Do not allow a metal object to touch the terminals of the battery.
- When storing for a long period of time, keep the battery approximately at the charging state of 60 ~ 80% and regularly use it. The battery should be completely discharged and recharged once each month to condition the cells inside the battery to ensure the battery delivers the most available capacity.
- The battery consists of precision electrical components and cells. Do not drop or hit the battery.

2.3 SIM Card Installation

When you want to insert the SIM card (only for HSUPA-0710), please follow the steps below:

1. Disconnect the DC power plug and turn off the computer.
2. Remove any peripheral devices connected to the computer.
3. Unscrew the screw which fixes the battery to the unit.
4. Remove the battery.
5. Insert the SIM card into the SIM card slot with the gold-colored contacts facing down.
6. When finished, insert the battery into the battery compartment and fix it with its screw.



2.4 DC Power Supply

Apart from the battery pack, the table PC can also be powered by the AC to DC power adapter. If the battery is running low, you can immediately plug the DC connector into the power jack of the computer. With the DC power being supplied, the battery pack attached to the unit charges.



2.5 Drivers & Utilities Installation

2.5.1 Touch Screen Driver Installation

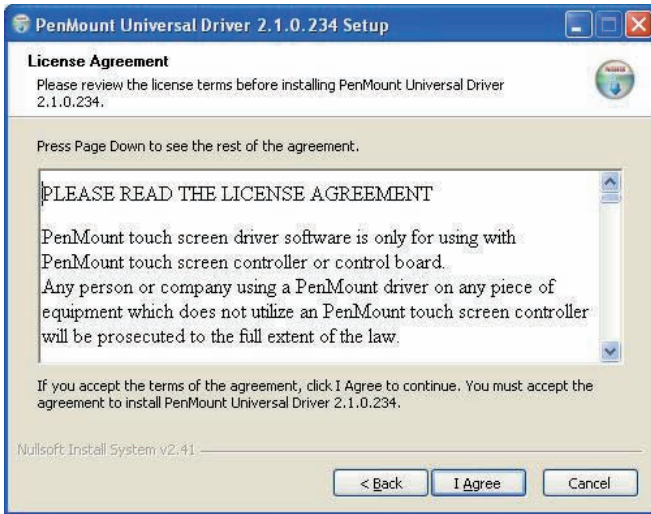
1. Click ***Touch Panel*** to install the driver for touch screen.



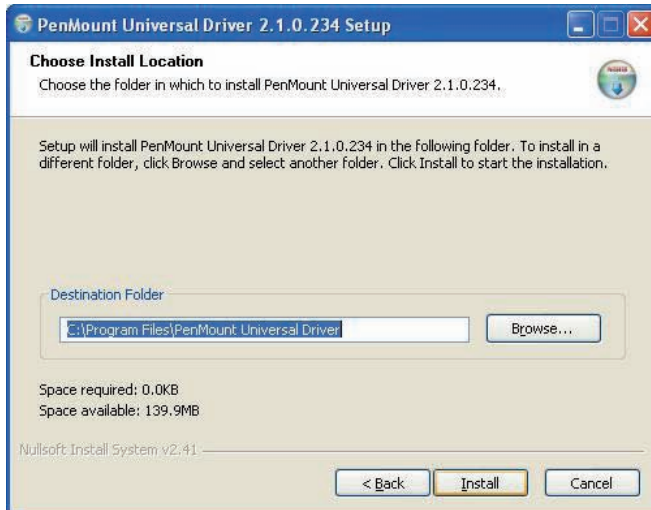
2. When you see the welcome wizard, click Next to continue.



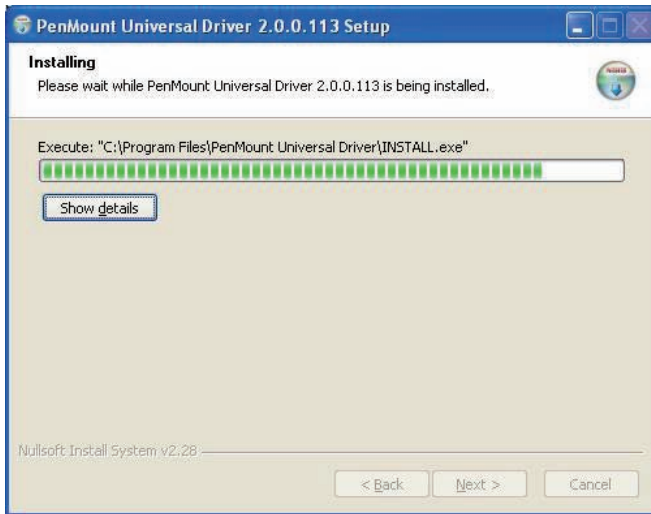
3. Please read the license agreement first, and click **I Agree** to continue.



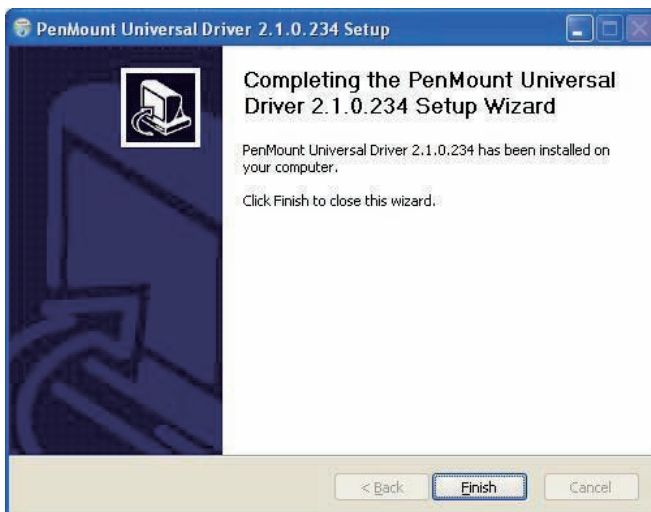
4. Click **Browse** to change the installation directory, or immediately click **Install** to continue.



5. Please wait for a while until the progress bar completes.



6. The installation is completed. Click **Finish** to close this window.



2.5.2 Chipset Driver Installation

1. Click **Chipset** of the main menu to install the chipset device driver.



2. Make sure you have closed all programs running and then click **Next** to continue.



3. Please read the license agreement first, and click **Yes** to continue.



4. Please read the License Agreement by pulling down the scroll bar, and click **Next** to continue.



5. The chipset device driver installation is completed. Click **Finish** to close the window.



2.5.3 Graphics Driver Installation

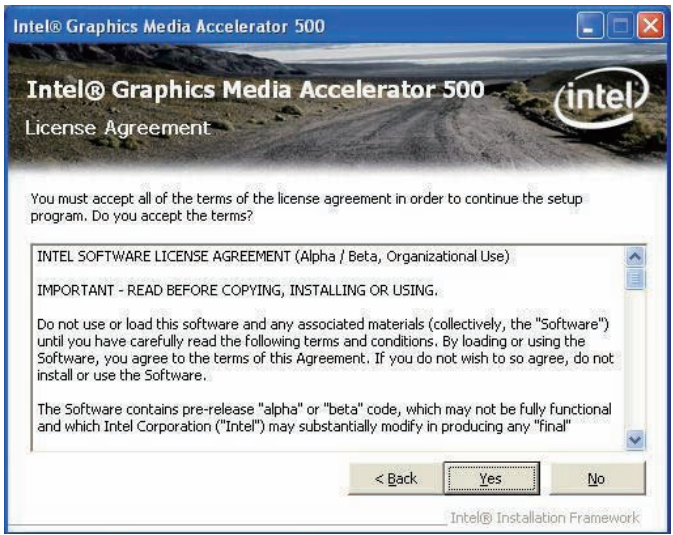
1. Click **VGA** of the main menu to install the graphics device driver.



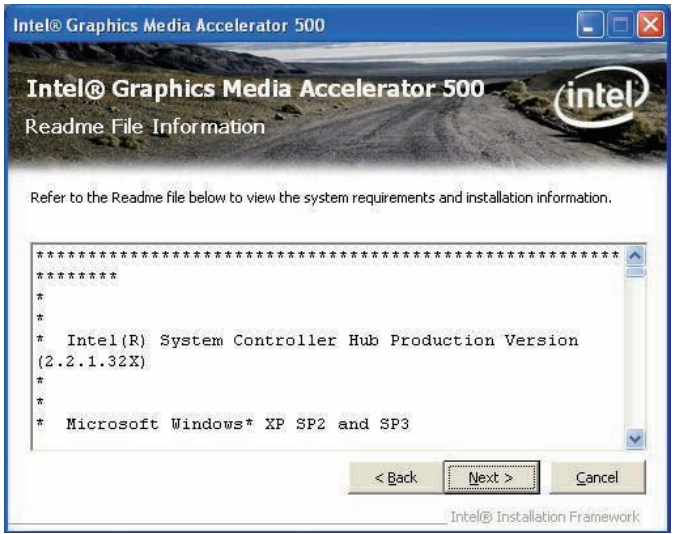
2. Make sure you have closed all programs running and then click **Next** to continue.



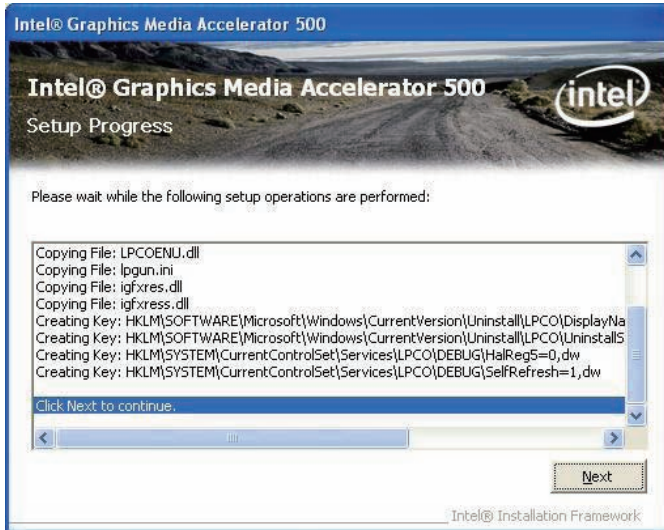
3. Please read the license agreement first, and click **Yes** to continue.



4. Please read the Readme file for system requirements and installation information, and click **Next** to continue.



5. The graphics device driver installation is completed. Click **Next** to continue.



6. After installing the graphics device driver, click **Finish** with **Yes** radio button selected to restart your computer to have the changes take effect, or with **No** to restart this computer later.

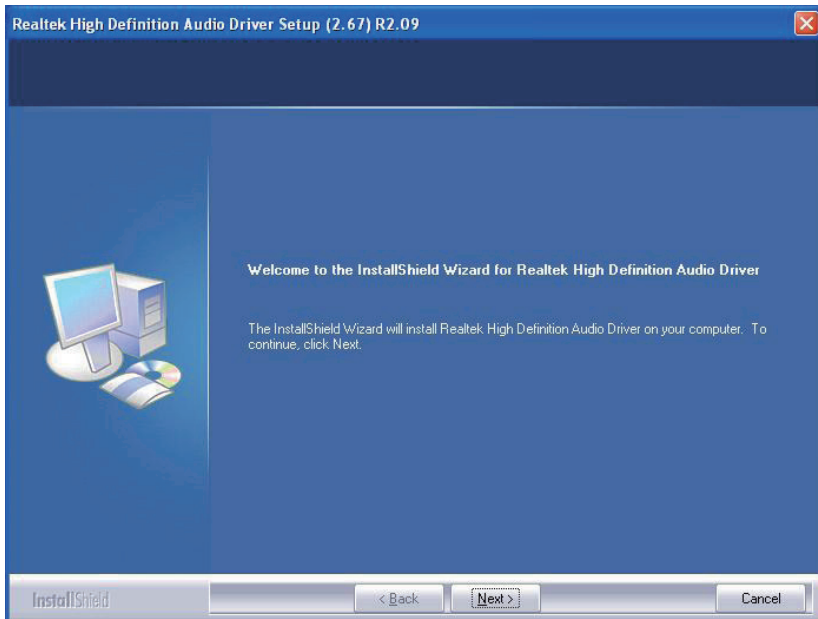


2.5.4 Audio Driver Installation

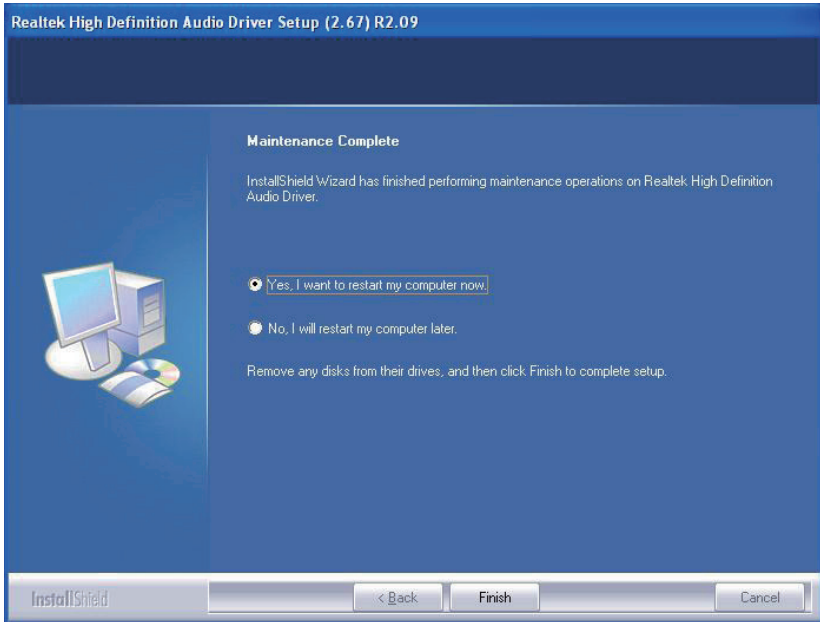
1. Click **Audio** of the main menu to install the audio device driver.



2. Click **Next** to continue.



3. After installing the audio device driver, click **Finish** with **Yes** radio button selected to restart your computer to have the changes take effect, or with **No** to restart this computer later.

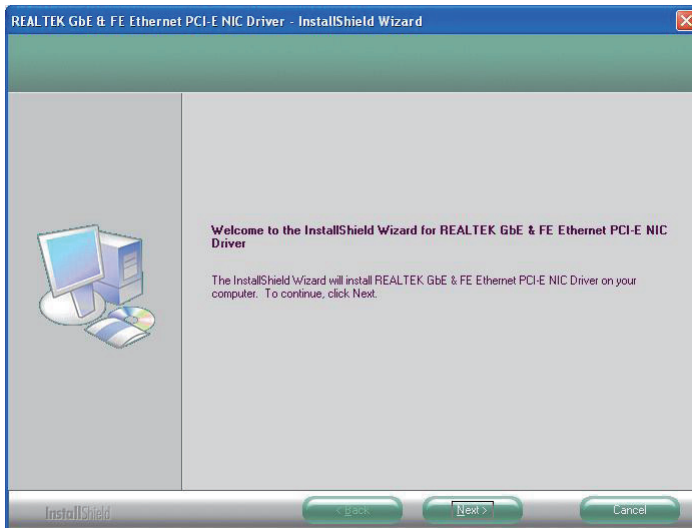


2.5.5 LAN Driver Installation

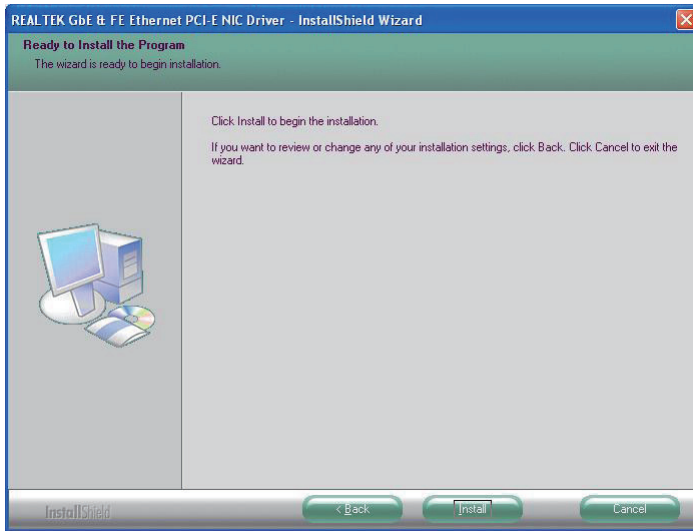
1. Click **LAN** of the main menu to install the LAN device driver.



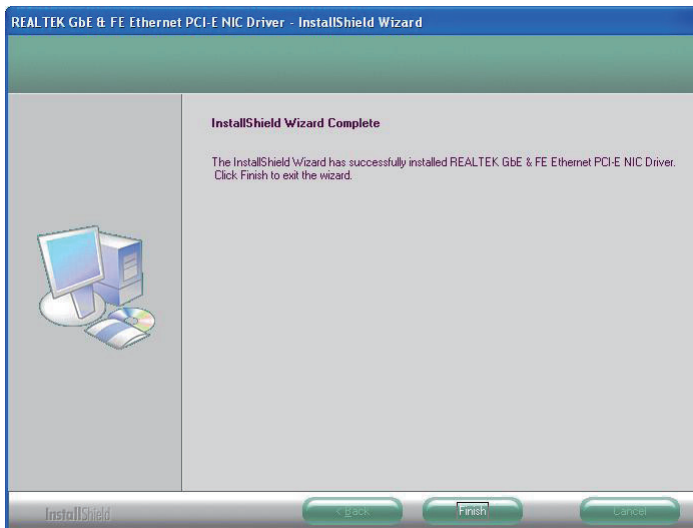
2. Click **Next** to continue.



3. Click **Install** to start installation, or **Back** to go back to the previous step.



4. Click **Finish** to close the wizard window.

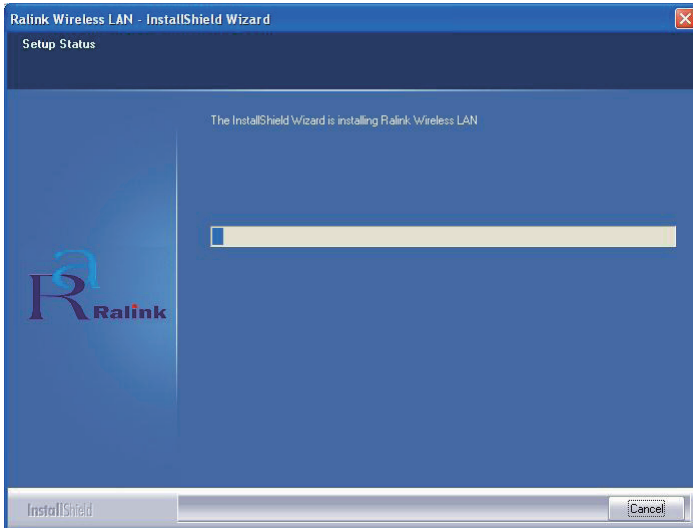


2.5.6 Wireless LAN Driver Installation

1. Click **Wireless LAN** of the main menu to install the wireless LAN device driver.



2. The installation is in progress; when the progress bar reaches the end, the installation is completed.



2.5.7 Bluetooth Driver Installation

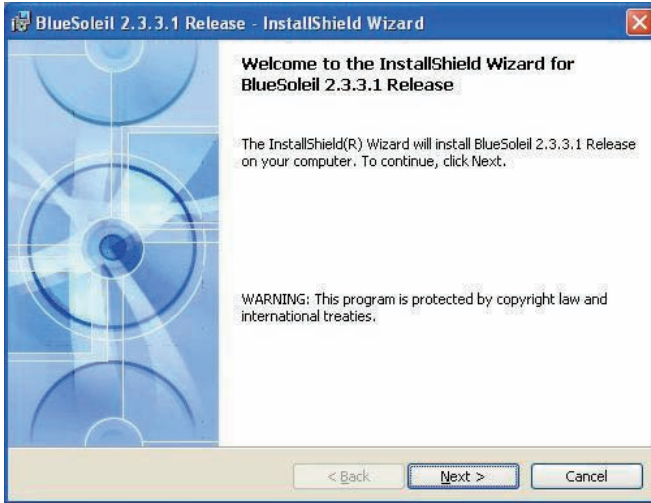
1. Click **Bluetooth** of the main menu to install the Bluetooth device driver.



2. A dialog box shows up. Click the down arrow to drop down the selection menu and choose a language item and then click **OK** to continue.



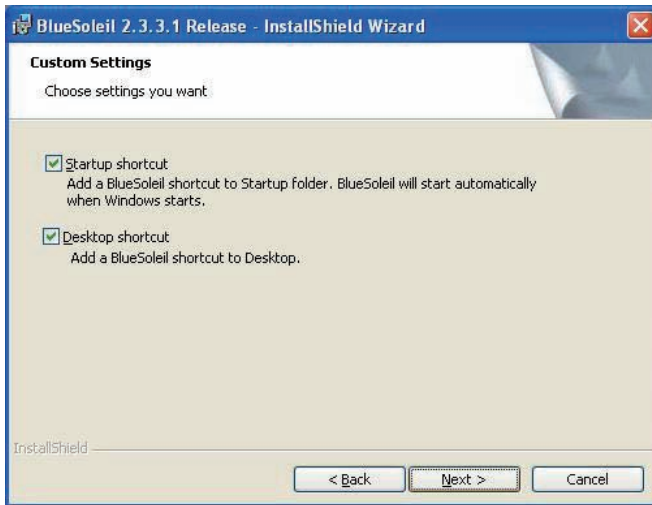
3. Check the driver information and click **Next** to continue.



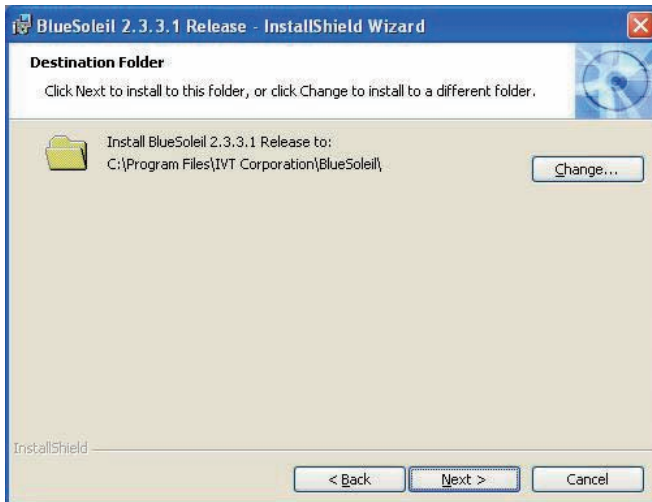
4. Please read the license agreement first; select **I accept the terms in the license agreement** and then click **Next** to continue.



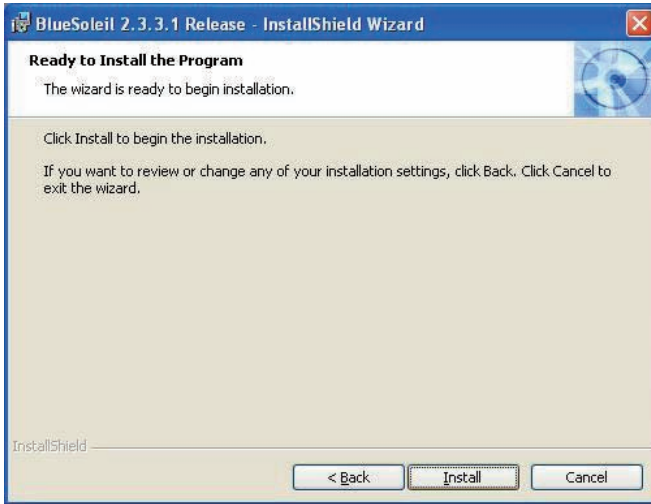
5. If you want to create shortcuts to Startup folder or Desktop, tick the check boxes beside the text label and then click **Next** to continue.



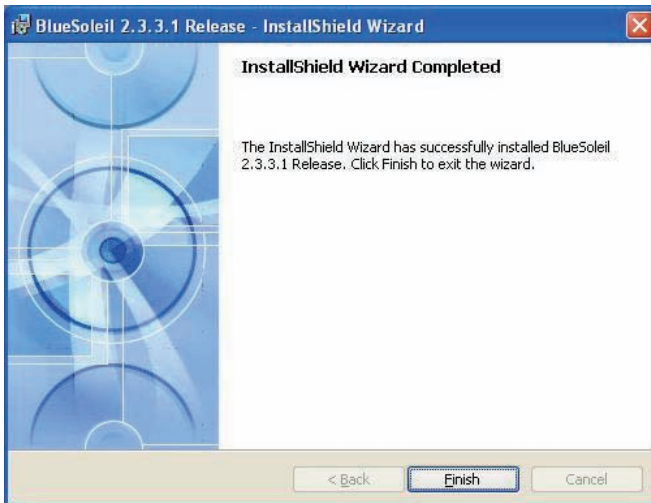
6. Click **Next** to install to this folder, or click **Change** to install to a different folder.



7. Click **Install** to start installation, or click **Back** to go back to the previous step.



8. After the installation is completed, click **Finish** to close the window.



2.5.8 RFID Driver Installation

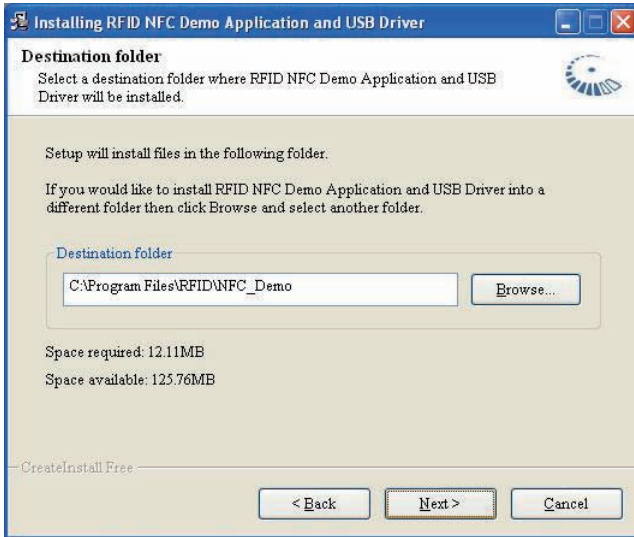
1. Click **RFID** of the main menu to install the RFID and USB devices driver.



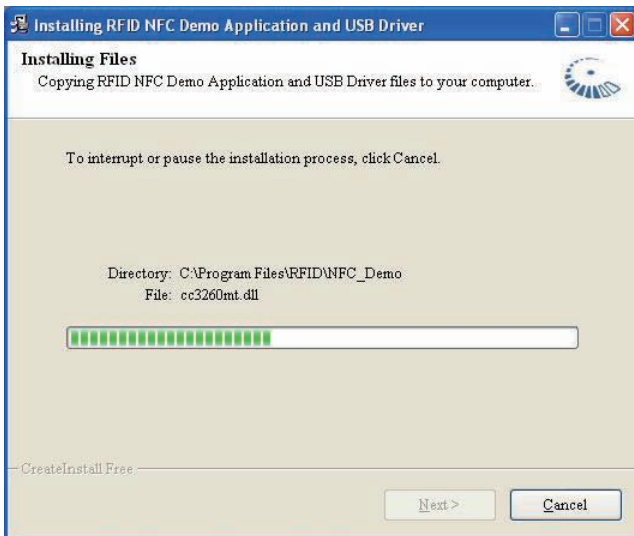
2. Read the driver information and then click **Next** to continue.



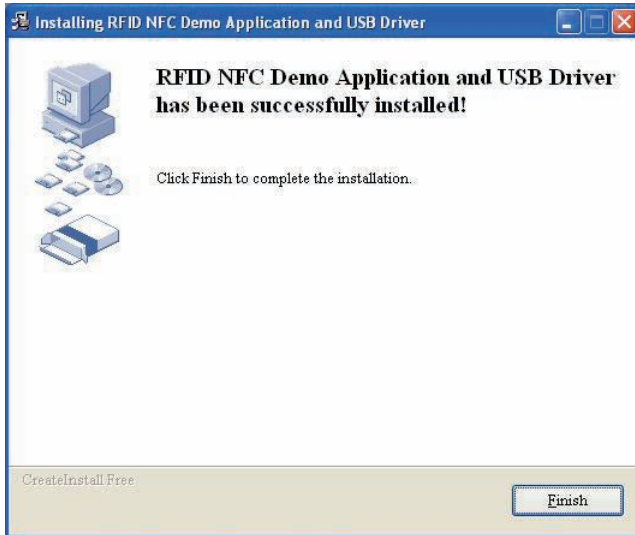
3. Click **Next** to install to this folder, or click **Browse** to install to a different folder.



4. The driver is being installed, please wait for a while.

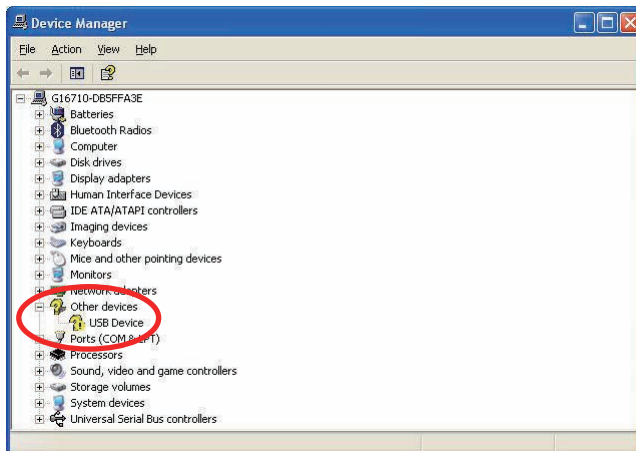


5. Click **Finish** to complete the installation.



Note:

After installation, the RFID device information in **Device Manager** may appear with an exclamation mark. To solve this problem, please manually update the driver for this device, just once.

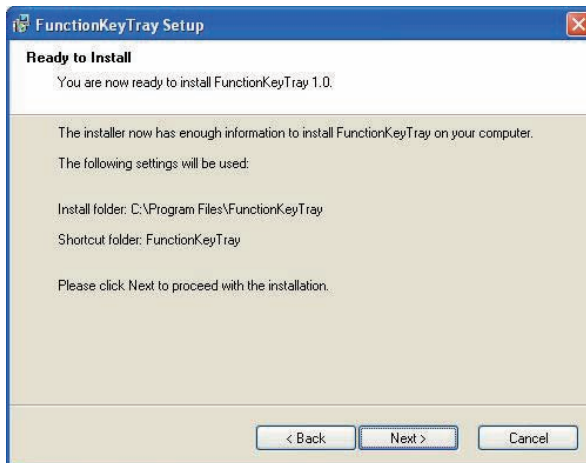


2.5.9 Function Key Tray Installation

1. After you put the CD-ROM into the CD-ROM drive, the driver and utility installation main menu appears. Click **FunctionKey** to install the function key configuration utility.



2. Click **Next** to continue.



3. When the installation is completed, click **Finish** to close the window.



2.6 Touch Screen

2.6.1 Tips for Using the Stylus

With the touch screen driver installed, users can use the stylus like a computer mouse to control the computer. Tapping with the stylus is equivalent to clicking with the left button of a mouse. For the right button behavior, tap anywhere on the screen and hold down until the menu is shown.



Also, users can have the mouse icon showing on the right side of the screen (see the next section—**PenMount Monitor**).

Tap the mouse icon to switch between Right and Left button functions, which means the stylus touching the screen will behave the same as clicking the Right/Left mouse button.

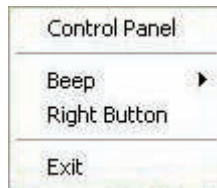


2.6.2 PenMount Monitor


The PenMount Monitor icon (PM) appears in the system tray at the bottom-right corner when you turn on PenMount Monitor in PenMount Utilities.



Tap on the PM icon and hold down for the pop-up menu shown below.



PenMount Monitor has the following functions:

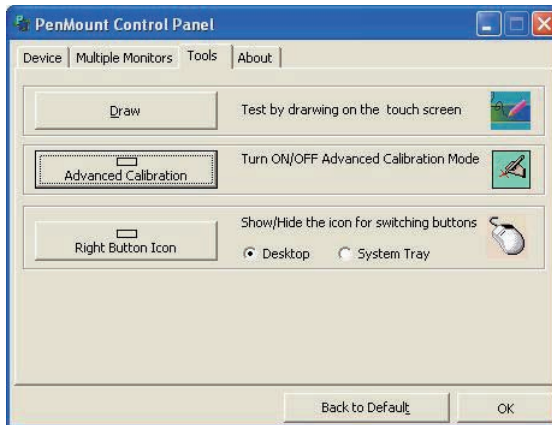
Control Panel	Launch the PenMount Control Panel utility.
Beep	Set the Beep function for each device.
Right Button	After ticking this item, a mouse icon  appears on the right side of the screen.
Exit	Exits the PenMount Monitor function.

2.6.3 PenMount Control Panel

After you have selected the Control Panel item on the pop-up menu, the PenMount Control Panel utility UI appears as below. The functions of the **PenMount Control Panel** such as Device, Calibrate, Setting, Multiple Monitors, Tools and About are explained in the following sections.

The Tools Tab

When you click the PenMount icon in the system tray and select "Control Panel" from the menu, "PenMount Control Panel" will appear. Among the four tabs—Device, Multiple Monitors, **Tools** and About—the function of Tools should be described first as follows:



Draw

Tests or demonstrates the PenMount touch screen operation.

Advanced Calibration

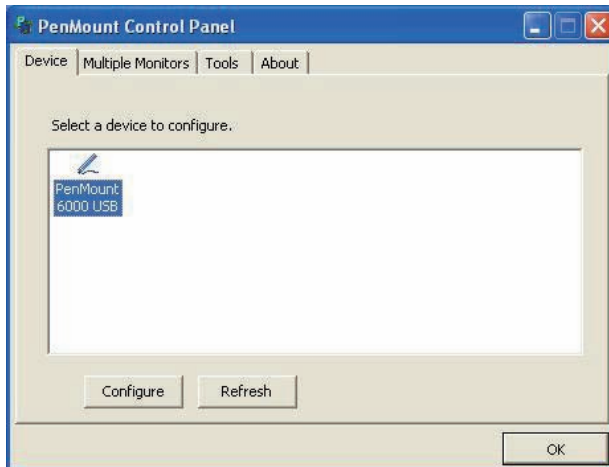
Enable Advanced Calibration function.

Right Button Icon

Enable right button function. The icon can show on Desktop or in the system tray at the bottom-right corner.

The Device Tab

In this window, you can find out how many devices are detected on your system. On the **Device** tab, select the device icon and tap **Configure**, or double tap the device icon for touch screen calibration.



And then another window with the **Calibrate** tab appears.

Device Calibration Dialog

The Calibrate Tab

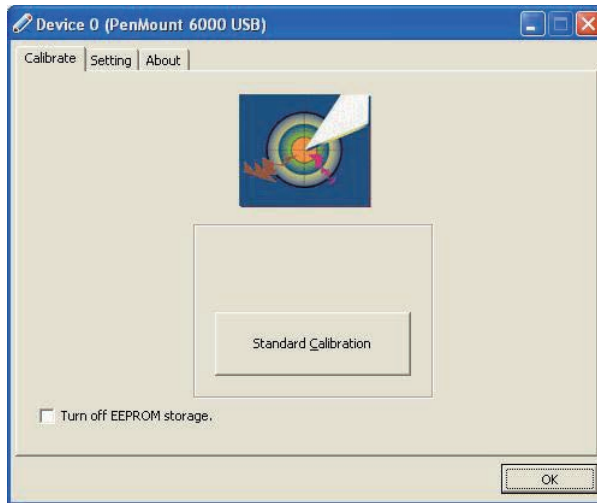
This function offers two ways to calibrate your touch screen. '**Standard Calibration**' adjusts most touch screens while '**Advanced Calibration**' adjusts aging touch screens.

Standard Calibration

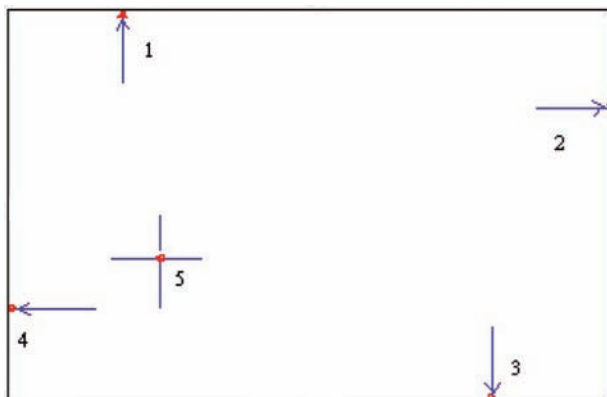
The Standard Calibration function lets you match the touch screen to your display so that the point you touch is accurately tracked on screen. Standard Calibration only requires four points for calibration and one point for confirmation. Under normal circumstance Standard Calibration is all you need to perform an accurate calibration.

By default, only the Standard Calibration button is available.

1. Please tap the Standard Calibration button to start calibration procedures.



2. After tapping the button, the arrow appears pointing to a red square. Use your finger or stylus to touch the red square and hold down until the screen shows the message—"Lift off to proceed".
3. And then the next arrow appears. After the fifth red point calibration is complete, press ESC key to quit.



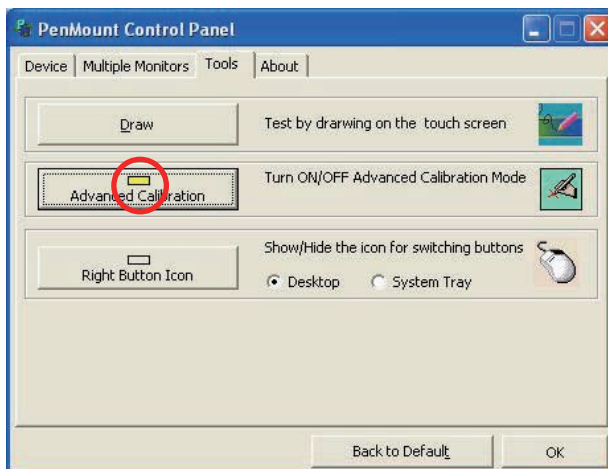
NOTE:

The older the touch screen gets, the more Advanced Mode calibration points you need for an accurate calibration. Use a stylus during Advanced Calibration for greater accuracy. Please follow the step as below:

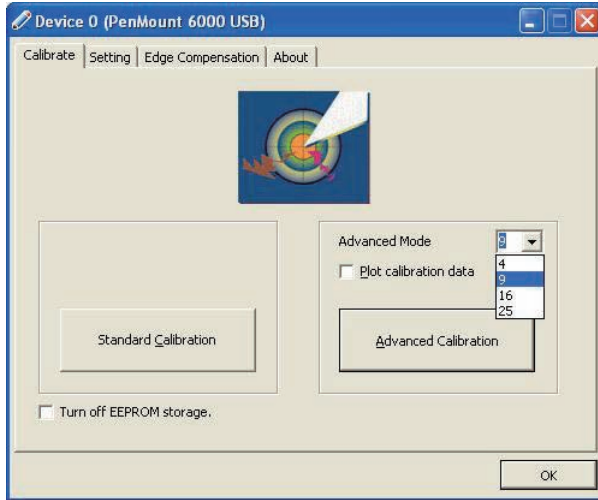
Advanced Calibration

The Advanced Calibration function improves the accuracy of calibration by using more involved engineering calculations. Use this function only if you have tried the Standard Calibration and there is still a discrepancy in the way the touch screen maps to the display. You can choose 4, 9, 16 or 25 points to calibrate, though we suggest that you first try 9 points, if it is still not tracking well then try 16 or 25 points. The more points you use for calibration, the greater the accuracy. Errors in calibration may occur due to viewing angle, or individual skill, and there may be little difference in using 16 or 25 points. Note that a stylus is recommended for the most accurate results.

1. Come back to PenMount Control Panel and select the **Tools** tab. Tap the Advanced Calibration button to enable it (when enabled, the small rectangle in the middle appears in yellow).



2. Select **Device** to calibrate, and then you can start to do "Advanced Calibration". Tap the arrow to pull down the drop-down menu and select the number determining how many points will be used for calibration.



Note: You are recommended to use a stylus during Advanced Calibration for greater accuracy.

3. After tapping the button, the arrow appears pointing to a red square. Use your finger or stylus to touch the red square and hold down until the screen shows the message—"Lift off to proceed" and then the next arrow appears. After the fifth red point calibration is complete, press ESC key to quit.



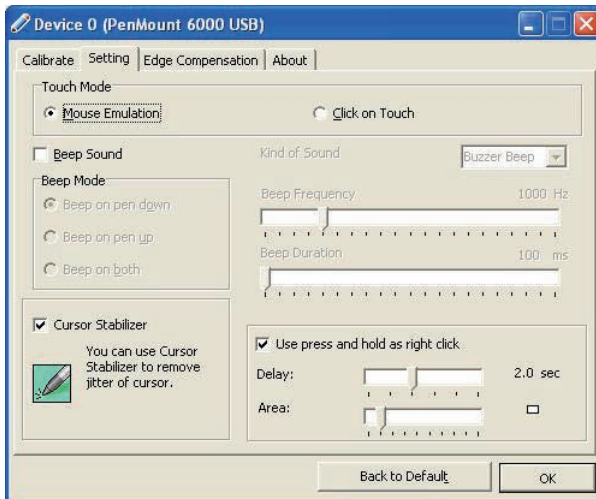
Plot Calibration Data

Check this function to have touch panel linearity comparison graph appear when you finish Advanced Calibration. The black lines reflect the ideal linearity assumed by PenMount's application program while the blue lines show the approximate linearity calculated by PenMount's application program as the result of user's execution of Advance Calibration.

Turn off EEPROM storage

Tick this function to disable the write-in of calibration data in Controller.

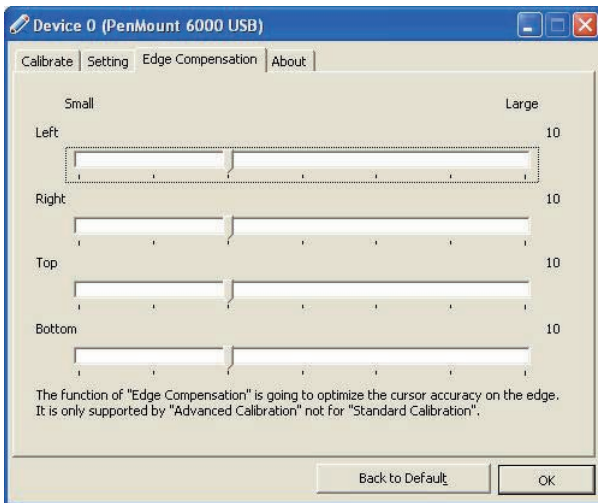
The Setting Tab



Touch Mode	This mode enables and disables the mouse's ability to drag on-screen icons.
Mouse Emulation	Select this mode and the mouse functions as normal and allows dragging of icons.
Click on Touch	Select this mode and the mouse only provides a click function, and dragging is disabled.
Beep Sound	Turn On/Off Beep Sound.
Beep on Pen Down	Beep occurs when pen is down.
Beep on Pen Up	Beep occurs when pen is up.
Beep on Both	Beep occurs when pen is down or up.
Beep Frequency	Modifies sound frequency.
Beep Duration	Modifies sound duration.
Cursor Stabilizer	Enable the function supporting to prevent cursor shake.
Use press and hold as right click	You can set the time out and area as you need.

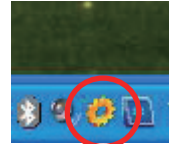
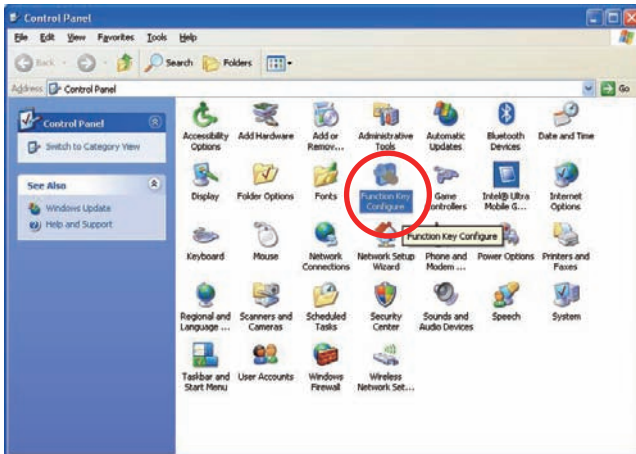
The Edge Compensation Tab

This tab is the edge compensation settings for the advanced calibration. You can adjust the settings from 0 to 30 for accommodating the difference of each touch panel.



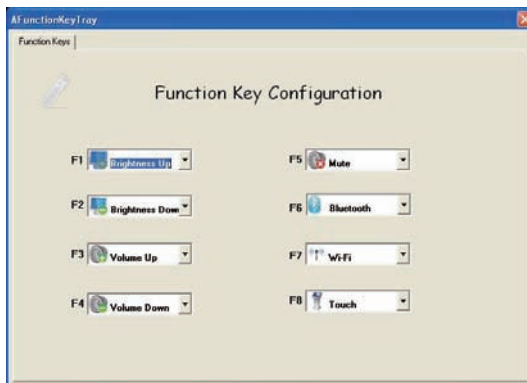
2.7 Function Key Tray

See the figures below, a new item named **FunctionKey Tray Configuration** is created in **Control Panel**. By using this utility, users can redefine the function buttons located on the front panel. In addition, users can also double click the icon in System Tray to bring up the utility window.



2.7.1 Function Key Configuration

Click the icon to bring up the **Function Key Tray**. Click the arrow to pull down the selection menu and choose a function to be assigned to the individual function button (F1 ~ F8).





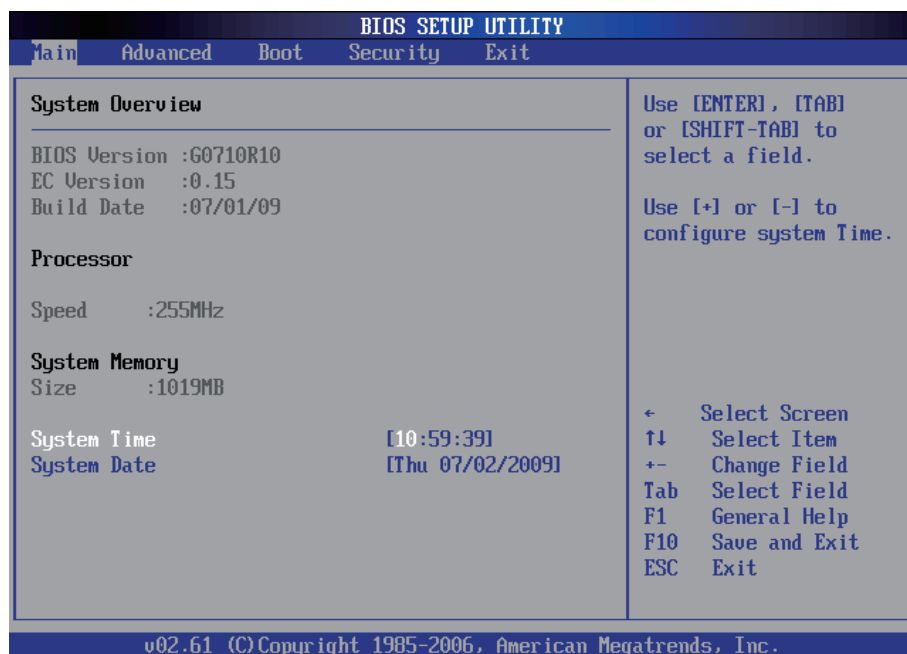
Chapter 3

BIOS

3.1 BIOS Main Setup

The AMI BIOS provides a Setup utility program for specifying the system configurations and settings. The BIOS ROM of the system stores the Setup utility.

When you turn on the computer, the AMI BIOS is immediately activated. The **Main** menu allows you to select several configuration options. Use the left/right arrow keys to highlight a particular configuration screen from the top menu bar or use the down arrow key to access and configure the information below.



System Time

Set the system time.

The time format is:

Hour : 00 to 23

Minute : 00 to 59

Second : 00 to 59

System Date

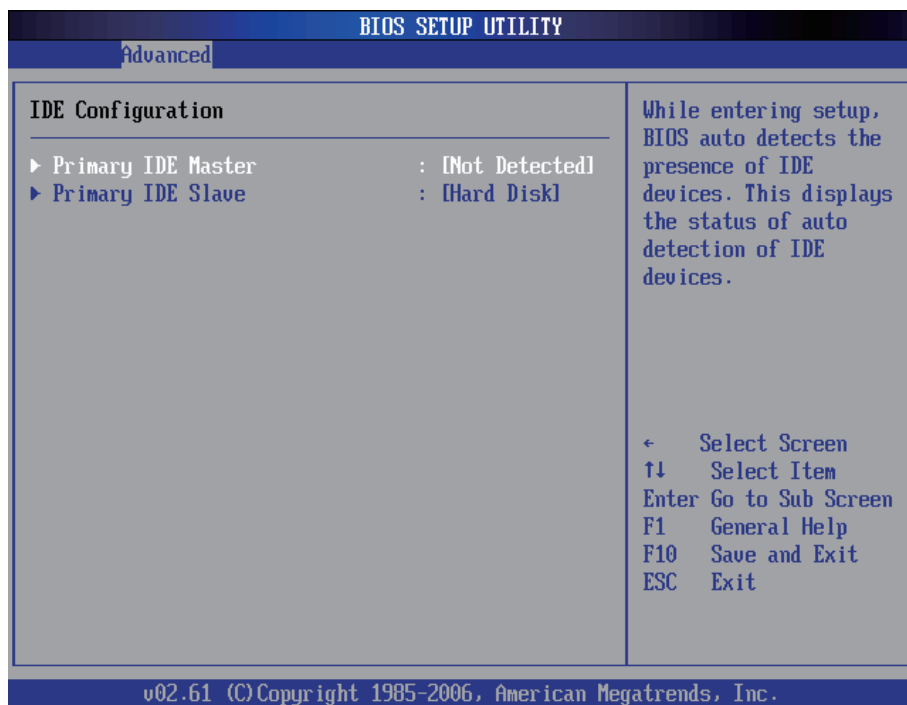
Set the system date. Note that the 'Day' automatically changes when you set the date.

The date format is: **Day** : Sun to Sat
 Month : 1 to 12
 Date : 1 to 31
 Year : 1999 to 2099

3.2 Advanced Settings

The screenshot shows the BIOS Setup Utility interface. At the top, the title is "BIOS SETUP UTILITY" in a blue bar. Below the title, there are five menu options: "Main", "Advanced", "Boot", "Security", and "Exit". The "Advanced" option is currently selected and highlighted. The main area of the screen is divided into two columns. The left column is titled "Advanced Settings" and contains a warning message: "WARNING: Setting wrong values in below sections may cause system to malfunction." Below the warning, there is a list of configuration options under the heading "IDE Configuration": "Brightness default level [Step 5]", "Install OS Configuration [Disable]", "BlueTooth Configuration [Enable]", "RFID Configuration [Enable]", "Wifi Configuration [Enable]", and "Battery low Beep Configuration [Disable]". The right column is titled "Configure the IDE device(s)." and contains a list of navigation instructions: "← Select Screen", "↑↓ Select Item", "Enter Go to Sub Screen", "F1 General Help", "F10 Save and Exit", and "ESC Exit". At the bottom of the screen, there is a blue bar with the text "v02.61 (C) Copyright 1985-2006, American Megatrends, Inc."

3.2.1 IDE Configuration



Primary IDE Master/Slave

Select one of the hard disk drives to configure it. Press <Enter> to access its sub menu.

IDE Configuration Sub Menu

BIOS SETUP UTILITY	
Advanced	
Primary IDE Slave	
Device :Hard Disk	Select the type of device connected to the system.
Vendor :SILICON POWER	
Size :4.0GB	
LBA Mode :Supported	
Block Mode:Not Supported	
PIO Mode :4	
Async DMA :MultiWord DMA-2	
Ultra DMA :Ultra DMA-5	
S.M.A.R.T. :Supported	
Type [Auto]	
LBA/Large Mode [Auto]	← Select Screen
Block (Multi-Sector Transfer) [Auto]	↑↓ Select Item
PIO Mode [Auto]	+ - Change Option
DMA Mode [Auto]	F1 General Help
S.M.A.R.T. [Auto]	F10 Save and Exit
32Bit Data Transfer [Enabled]	ESC Exit
v02.61 (C) Copyright 1985-2006, American Megatrends, Inc.	

Type

This setting determines the type of the IDE device. The default value is **Auto**.

LBA/Large Mode

This setting enables or disables support for IDE drives with capacities greater than 528MB. The default value is **Auto**.

Block (Multi-Sector Transfer)

This setting enables or disables to support IDE drives using Block Mode. The default value is **Auto**.

PIO Mode

This setting determines the IDE Programmed I/O mode. The default value is **Auto**.

DMA Mode

This setting determines the IDE DMA mode. The default value is **Auto**.

S.M.A.R.T

This setting determines the IDE Self-Monitoring, Analysis and Reporting Technology mode. The default value is **Auto**.

32Bit Data Transfer

This setting determines support for IDE drives that permit 32-bit accesses. The default value is **Enabled**.

3.2.2 Brightness Default Level

This setting determines the default brightness level ranging from 0 to 7. By default, the value is set to 5.

3.2.3 Install OS Configuration

Use this setting to enable/disable the OS installing configuration.

3.2.4 Bluetooth Configuration

Use this setting to enable/disable the Bluetooth function.

3.2.5 RFID Configuration

Use this setting to enable/disable the RFID function.

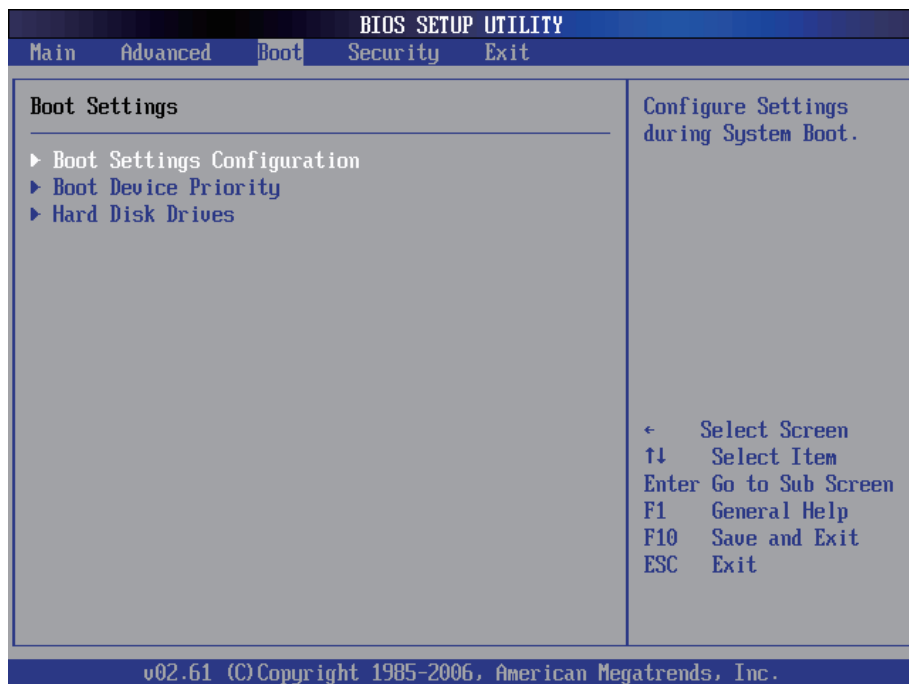
3.2.6 WiFi Configuration

Use this setting to enable/disable the WiFi function.

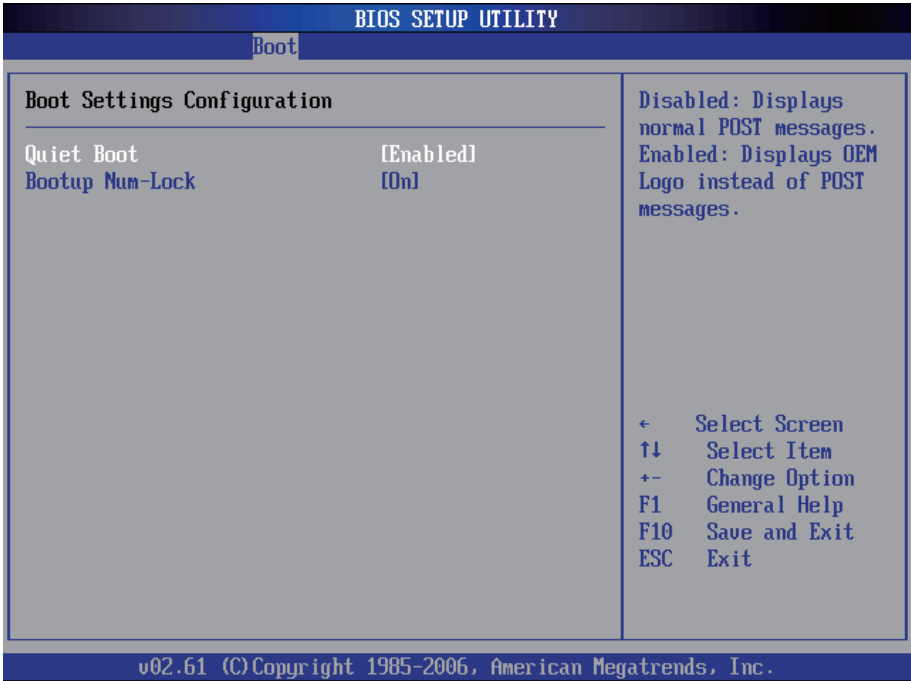
3.2.7 Battery Low Beep Configuration

Use this setting to enable/disable the beep when battery is running low.

3.3 Boot Settings



3.3.1 Boot Settings Configuration



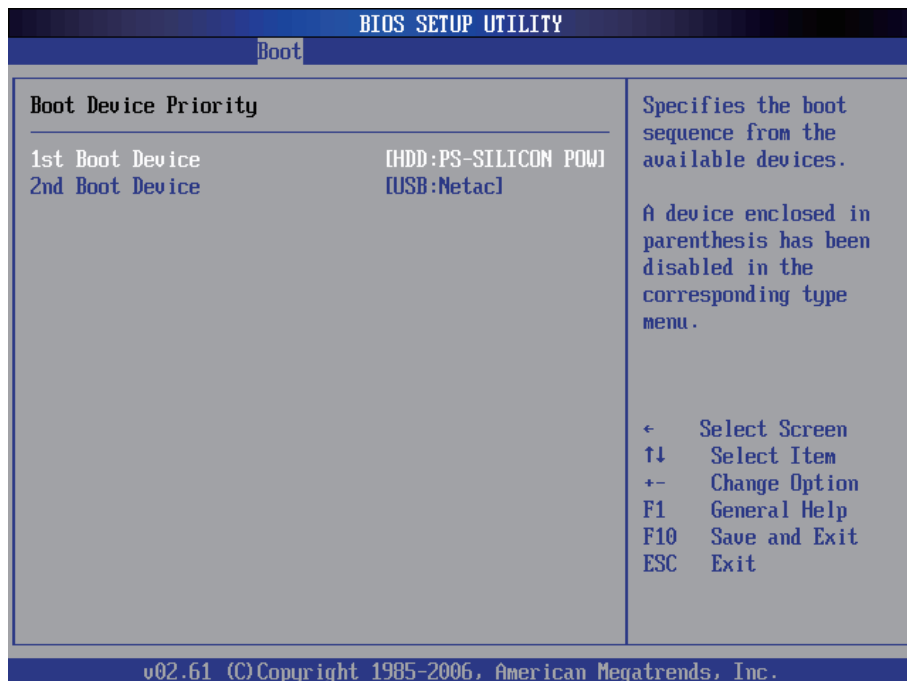
Quiet Boot

This setting determines if the BIOS should hide the normal POST messages with the motherboard or system manufacture’s full-screen logo. When it is enabled, the BIOS will diaplay the full-screen logo during the boot-up sequence, hiding normal POST messages. When it is disabled, the BIOS will display the normal POST messages instead of the full-screen logo.

Bootup Num-Lock

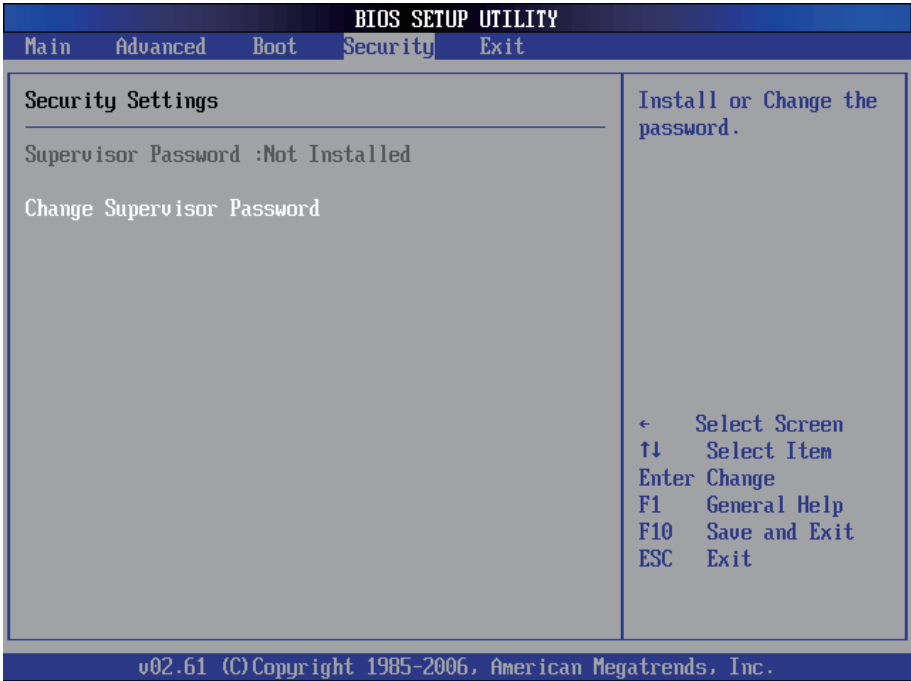
This setting determines whether the Num Lock key should be activated at boot up.

3.3.2 Boot Device Priority



This setting determines the order that the BIOS uses to look for a boot device from which to load the operating system during the DOS boot process.

3.3 Security



Supervisor Password

Set **Change Supervisor Password** to enter and change the options of the setup menus. When you select this function, the following message will appear at the center of the screen to assist you in creating a password.

Enter New Password:

Type the password, up to six characters in length, and press <Enter>. The password typed now will substitute for any previously entered password from CMOS memory. You will be asked to confirm the password. Type the password again and press <Enter>. You may also press <ESC> to abort the selection and not enter a password.

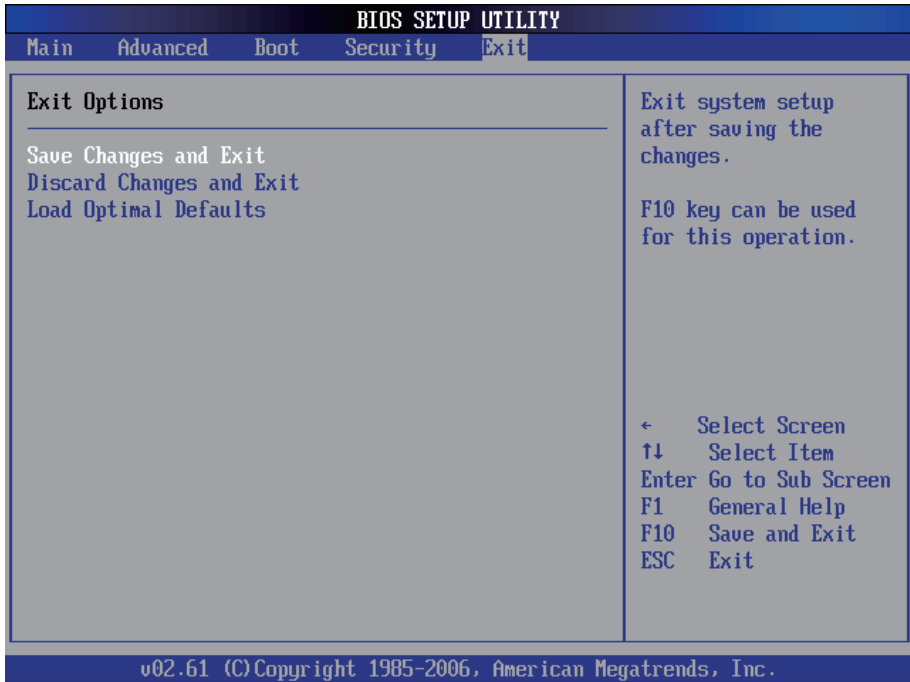
With a password enabled, a Password Check item appears. Set this item to **Setup**, you will be prompted to enter the password every time you try to enter the BIOS Setup utility. This prevents an unauthorized person from changing any part of your system configuration.

You can also require the BIOS to request a password every time your system is rebooted by setting it to **Always**. This would prevent unauthorized use of your computer.

To clear a password, just leave the field blank and press <Enter> when you are prompted to enter a new password. Once the password is cleared, the following message will appear at the center of the screen.

Password Uninstalled.

3.4 Exit Options



Save Changes and Exit

Pressing <Enter> on this item and it asks for confirmation:

Save configuration changes and exit setup?

Pressing <OK> stores the selection made in the menus in CMOS - a special section of memory that stays on after you turn your system off. The next time you boot your computer, the BIOS configures your system according to the Setup selections stored in CMOS. After saving the values the system is restarted again.

Discard Changes and Exit

Exit system setup without saving any changes.
 <ESC> key can be used for this operation.

Load Optimal Defaults

When you press <Enter> on this item, you get a confirmation dialog box with a message:

Load Optimal Defaults?
[OK] [Cancel]

Pressing [OK] loads the BIOS Optimal Default values for all the setup configurations.

<F9> key can be used for this operation.

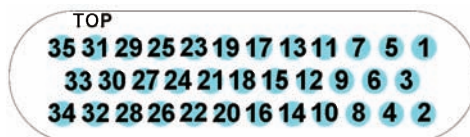


Appendix

A.1 POGO Connector

G0710 is equipped with a POGO 35-pin connector. For further information about this interface, please refer to the pin arrangement/assignments shown below.

Pin Arrangement



Pin Assignments

Pin	Definition	Pin	Definition
1	GND	19	SYSTEM_IN#
2	GND	20	LAN_TRL3-
3	+20AUX	21	SMB_CLK_CPU
4	LAN_TRL0+	22	3V3SB
5	+20AUX	23	SMB_DATA_CPU
6	LAN_TRL0-	24	USB_PP2
7	+20AUX	25	CRT_R_HSYNC
8	LAN_TRL1+	26	USB_PN2
9	VCC5	27	CRT_R_VSYNC
10	LAN_TRL1-	28	CRADLE_IN#
11	VCC3	29	CRT_BLUE
12	GND	30	CRT_CLK
13	VCC5	31	CRT_GREEN
14	LAN_TRL2+	32	CRT_DAT
15	VCC5	33	CRT_RED
16	LAN_TRL2-	34	GND
17	DOCK_GPIO	35	GND
18	LAN_TRL3+		